

HOTEL EQUIPMENTS

HOTEL EQUIPMENTS





PRODUCT CODE: **PX HEQ-01**

White Door Hotel Minibar

- C-Pentane use (Eco-Friendly)
- Silent absorption cooling technology
- Automatic thermostat
- White plastic shelves



PRODUCT CODE: **PX HEQ-02**

Black Door Hotel Minibar

- C-Pentane use (Eco-Friendly)
- Silent absorption cooling technology
- Automatic thermostat
- White plastic shelves



PRODUCT CODE: **PX HEQ-03**

Glass Door Hotel Minibar - White

- C-Pentane use (Eco-Friendly)
- Silent absorption cooling technology
- Automatic thermostat
- White plastic shelves



PRODUCT CODE: **PX HEQ-04**

Glass Door Hotel Minibar - Black

- C-Pentane use (Eco-Friendly)
- Silent absorption cooling technology
- Automatic thermostat
- White plastic shelves



PRODUCT CODE: **PX HEQ-05**

Exclusive Hotel Minibar - White

- C-Pentane use (Eco-Friendly)
- Silent absorption cooling technology
- Automatic thermostat
- Plastic shelves and chrome bottle rack
- LED lighting



PRODUCT CODE: **PX HEQ-06**

Exclusive Hotel Minibar - Black

- C-Pentane use (Eco-Friendly)
- Silent absorption cooling technology
- Automatic thermostat
- Plastic shelves and chrome bottle rack
- LED lighting



PRODUCT CODE: **PX HEQ-07**

Laptop Safe Box - White

- 4-6 digits password system
- It has a master password feature
- It can be opened with the CEU password
- Audit trail of last 100 opening and closing can be read and print out
- Scratch resistant powder coated
- Laptop can be stored inside



PRODUCT CODE: **PX HEQ-08**

Laptop Safe Box - Black

- 4-6 digits password system
- It has a master password feature
- It can be opened with the CEU password
- Audit trail of last 100 opening and closing can be read and print out
- Scratch resistant powder coated
- Laptop can be stored inside



PRODUCT CODE: **PX HEQ-09**

Standard Safe Box - White

- 4-6 digits password system
- It has a master password feature
- It can be opened with the CEU password
- Audit trail of last 100 opening and closing can be read and print out
- Scratch resistant powder coated



PRODUCT CODE: **PX HEQ-10**

Standard Safe Box - Black

- 4-6 digits password system
- It has a master password feature
- It can be opened with the CEU password
- Audit trail of last 100 opening and closing can be read and print out
- Scratch resistant powder coated



PRODUCT CODE: **PX HEQ-11**

Wooden Luggage Rack

- Wooden
- Foldable
- Inclined backrest



PRODUCT CODE: **PX HEQ-12**

Wooden Luggage Rack - Black

- Wooden
- Foldable
- Inclined backrest



PRODUCT CODE: **PX HEQ-13**

Stainless Steel Luggage Rack

- Chrome Plated Metal
- Foldable



PRODUCT CODE: **PX HEQ-14**

(Bumbered Back Bar) Stainless Steel Luggage

- Chrome Plated Metal
- Foldable
- Inclined backrest



PRODUCT CODE: **PX HEQ-15**

Melamine Hotel Tray

- Melamine body
- 2 cups + 3 material compartments
- Cup, tray/coffee, tea and sugar slot



PRODUCT CODE: **PX HEQ-16**

ABS Plastic Tray

- Melamine body
- 2 cups + 4 material compartments



PRODUCT CODE: **PX HEQ-17**

Standart Wooden Hotel Tray

- Beech Wood Trays
- 2 cups + 2 material compartments
- Non-slip rubber feet



PRODUCT CODE: **PX HEQ-18**

Mega Wooden Hotel Tray

- Beech Wood Trays
- 2 cups + 5 material compartments
- Non-slip rubber feet

PRODUCT CODE: **PX HEQ-19**

Premium Wooden Hotel Tray

- Beech Wood Trays
- 2 cups + 4 material compartments
- Non-slip rubber feet

PRODUCT CODE: **PX HEQ-20**

Mini Wooden Hotel Tray

- ABS body
- 2 cups + material compartments
- Non-slip rubber feet

PRODUCT CODE: **PX HEQ-21**

Hotel Type Ironing Board

- Fireproof fabric
- Adjustable height
- Painted steel structure

PRODUCT CODE: **PX HEQ-22**

Iron Rest and Hanging Ironing Board Holder

- Heat resistant material
- Chrome plated

PRODUCT CODE: **PX HEQ-23**

Iron

- 2200 W
- Drip Prevention System
- Ceramic Base
- Vertical Steam
- Shock Steam

PRODUCT CODE: **PX HEQ-24**

Cashier Folder

- Faux Leather
- 3 information card slots
- 1 pencil holder
- Dimensions: 300 x 370 mm

PRODUCT CODE: **PX HEQ-25**

Directory

- Faux Leather
- 3 information card slots
- 1 pencil holder
- Dimensions: 225 x 315 mm

PRODUCT CODE: **PX HEQ-26**

Remote Control Caddy

- Faux Leather
- 1 Tv remote card slots
- 1 transparent information card slot
- Dimensions: 135 x 255 x 40 mm

PRODUCT CODE: **PX HEQ-27**

Room NotePad Blotter

- Faux Leather
- 1 pencil holder
- Dimensions: 170 x 200 mm

PRODUCT CODE: **PX HEQ-28**

Tissue Holder Boxes

- Faux leather
- Dimensions: 245 x 130 x 60 mm

PRODUCT CODE: **PX HEQ-29**

Cube Tissue Holder Boxes

- Faux leather
- Dimensions: 140 x 140 x 140 mm

PRODUCT CODE: **PX HEQ-30**

Leather Door Signs

- Faux leather
- Dimensions: 250 x 100 mm

PRODUCT CODE: **PX HEQ-31**

Leather Door Signs Hanging

- Faux leather
- Dimensions: 390 x 100 mm

PRODUCT CODE: **PX HEQ-32**

Leather Bin

- Faux leather
- Dimensions: 270 x 225 mm

PRODUCT CODE: **PX HEQ-33**

Leather Waste Basket

- Faux leather
- Dimensions: 310 x 190 mm

PRODUCT CODE: **PX HEQ-34**

Leather Placemat

- Faux leather
- Dimensions: 430 x 320 mm

PRODUCT CODE: **PX HEQ-35**

Leather Tray

- Faux leather
- Dimensions: 435 x 375 x 25 mm

PRODUCT CODE: **PX HEQ-36**

Leather Wardrobe Organizer

- Faux Leather
- 3 big holder
- 3 small holder
- Dimensions: 135 x 255 x 40 mm



PRODUCT CODE: **PX HEQ-37**

Leather Brochure Stand

- Faux Leather
- 3 big holder
- Dimensions: 170 x 200 mm



PRODUCT CODE: **PX HEQ-38**

Standard Hair Dryers 1000 W

- Powerful fast hair drying 1000W
- Hairdryer with on/off switch
- Spiral cable
- Circuit protection against over-heating
- Speed selection (one settings)
- ABS wall support



PRODUCT CODE: **PX HEQ-39**

Standard Hair Dryers 1200 W

- Powerful fast hair drying 1200W
- Hairdryer with on/off switch
- Spiral cable
- Circuit protection against over-heating
- Speed selection (two settings)
- ABS wall support



PRODUCT CODE: **PX HEQ-40**

Hair Dryer Drawer Type 1600 W - White

- Max Power: 1600 Watts
- Speed Adjustment: 2 Levels
- Temperature Setting: 3 Levels
- On / Off Button
- Silicone Spiral Cable
- Nonwoven special bag



PRODUCT CODE: **PX HEQ-41**

Hair Dryer Drawer Type 1600 W - Black

- Max Power: 1600 Watts
- Speed Adjustment: 2 Levels
- Temperature Setting: 3 Levels
- On / Off Button
- Silicone Spiral Cable
- Nonwoven special bag



PRODUCT CODE: **PX HEQ-42**

Mega Hair Dryer 2300 W

- Powerful 2300W for fast drying
- Speed selection (two settings)
- 3 airflow
- Special warming the outer cabinet
- Soft-touch grip
- Hanging loop
- Removable air inlet filter for easy clean
- ABS wall support



PRODUCT CODE: **PX HEQ-43**

Luxury Hair Dryer 1200 W - White

- Powerful fast hair drying 1200W
- Hairdryer with on/off switch
- Spiral cable
- Circuit protection against over-heating
- Speed selection (two settings)
- ABS wall support



PRODUCT CODE: **PX HEQ-44**

Luxury Hair Dryer 1200 W - Black

- Powerful fast hair drying 1200W
- Hairdryer with on/off switch
- Spiral cable
- Circuit protection against over-heating
- Speed selection (two settings)
- ABS wall support



PRODUCT CODE: **PX HEQ-45**

Hair Dryer with Shaver Socket 1600 W - White

- Powerful fast hair drying 1600W
- Hairdryer with on/off switch
- Spiral cable
- Circuit protection against over-heating
- Speed selection (three settings)
- ABS wall support
- Shaver socket 110 / 220 V



PRODUCT CODE: **PX HEQ-46**

Hair Dryer with Shaver Socket 1600 W - Black

- Powerful fast hair drying 1600W
- Hairdryer with on/off switch
- Spiral cable
- Circuit protection against over-heating
- Speed selection (three settings)
- ABS wall support
- Shaver socket 110 / 220 V



PRODUCT CODE: **PX HEQ-47**

Toilet Brush and Holder Set

- Dimensions: 280 x 110 x 1920 mm



PRODUCT CODE: **PX HEQ-48**

Toilet Brush and Holder

- Dimensions: 220 x 220 x 800 mm



PRODUCT CODE: **PX HEQ-49**

Wall Mounted Toilet Brush Holder

- Dimensions: 280 x 110 x 120 mm



PRODUCT CODE: **PX HEQ-50**

Corner Basket

- Dimensions: 145 x 50 x 150 mm



PRODUCT CODE: **PX HEQ-51**

Handicap Safety Grab Bar

- Dimensions: 440 x 370 x 200 mm



PRODUCT CODE: **PX HEQ-52**

Toilet Roll Holder with Lid

- Dimensions: 130 x 130 x 75 mm



PRODUCT CODE: **PX HEQ-53**

Toilet Roll Holder

- Dimensions: 130 x 85 x 35 mm



PRODUCT CODE: **PX HEQ-54**

Towel Ring

- Dimensions: 190 x 190 x 45 mm

HOTEL EQUIPMENTS



PRODUCT CODE: **PX HEQ-55**

Waiting Toilet Paper Holder

- Dimensions: 229 x 122 x 81 mm



PRODUCT CODE: **PX HEQ-56**

Robe Hook

- Dimensions: 45 x 45 x 15 mm



PRODUCT CODE: **PX HEQ-57**

Soap Dish

- Dimensions: 110 x 45 x 120 mm



PRODUCT CODE: **PX HEQ-58**

Toothbrush Holder

- Dimensions: 105 x 95 x 70 mm



PRODUCT CODE: **PX HEQ-59**

Towel Shelf

- Dimensions: 500 x 230 x 200 mm



PRODUCT CODE: **PX HEQ-60**

Towel Bar

- Dimensions: 400 mm



PRODUCT CODE: **PX HEQ-61**

Glass Shelf

- Dimensions: 500 x 160 x 20 mm



PRODUCT CODE: **PX HEQ-62**

Stainless Steel Open Dustbin 5 Liters

- Dimensions: 260 x 200 x 200 mm



PRODUCT CODE: **PX HEQ-63**

Room NotePad Blotter

- Faux Leather
- 1 pencil holder
- Dimensions: 170 x 200 mm



PRODUCT CODE: **PX HEQ-64**

Fire Resistant Bin 8 Liters

- Dimensions: 250 x 200 x 220 mm



PRODUCT CODE: **PX HEQ-65**

Pedal Bin 5 Liters

- Dimensions: 280 x 200 x 210 mm



PRODUCT CODE: **PX HEQ-66**

Pedal Bin 12 Liters

- Dimensions: 355 x 250 x 245 mm



PRODUCT CODE: **PX HEQ-67**

Liquid Soap Dispenser 1000 ml

- Dimensions: 210 x 125 x 115 mm



PRODUCT CODE: **PX HEQ-68**

Paper Towel Dispenser

- Dimensions: 210 x 125 x 115 mm



PRODUCT CODE: **PX HEQ-69**

Toilet Seat Cover Dispenser

- Dimensions: 390 x 270 x 50 mm



PRODUCT CODE: **PX HEQ-70**

Cosmetic Mirror

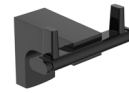
- Dimensions: 225 x 320 x 290 mm



PRODUCT CODE: **PX HEQ-71**

LED Lighted Cosmetic Mirror

- Dimensions: 220 x 220 x 345 mm



PRODUCT CODE: **PX HEQ-72**

Black Luxury Square Towel Holder

- Dimensions: 110 x 100 x 95 mm



PRODUCT CODE: **PX HEQ-73**

Black Luxury Quadruple Towel Holder

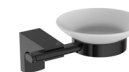
- Dimensions: 140 x 50 x 110 mm



PRODUCT CODE: **PX HEQ-74**

Black Stainless Steel Wall Mounted Tooth Brush Holder

- Dimensions: 260 x 180 x 80 mm



PRODUCT CODE: **PX HEQ-75**

Black Stainless Steel Wall Mounted Soap Holder

- Dimensions: 110 x 100 x 95 mm



PRODUCT CODE: **PX HEQ-76**

Black Luxury Toilet Roll Holder with Lid

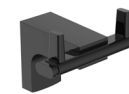
- Dimensions: 210 x 115 x 85 mm



PRODUCT CODE: **PX HEQ-77**

Black Luxury Toilet Roll Holder

- Dimensions: 130 x 90 x 90 mm



PRODUCT CODE: **PX HEQ-78**

Black Luxury Dual Robe Hook

- Dimensions: 61 x 76 x 60 mm



PRODUCT CODE: **PX HEQ-79**

Black Luxury Glass Shelf

- Dimensions: 50 x 500 x 120 mm



PRODUCT CODE: **PX HEQ-80**

Black Luxury Towel Bar

- Dimensions: 60 x 508 x 50 mm



PRODUCT CODE: **PX HEQ-81**

Chrome Soap Dispenser

- Dimensions: 150 x 90 x 50 mm



PRODUCT CODE: **PX HEQ-82**

Glass Soap Dispenser

- Dimensions: 150 x 90 x 50 mm



PRODUCT CODE: **PX HEQ-83**

Luxury Stainless Steel Wall Mounted Tooth Brush Holder

- Dimensions: 110 x 100 x 95 mm



PRODUCT CODE: **PX HEQ-84**

Luxury Stainless Steel Wall Mounted Soap Holder

- Dimensions: 140 x 50 x 110 mm



PRODUCT CODE: **PX HEQ-85**

Premium Corner Sponge Holder
• Dimensions: 200 x 200 mm



PRODUCT CODE: **PX HEQ-86**

Luxury Toilet Roll Holder with Lid
• Dimensions: 210 x 115 x 85 mm



PRODUCT CODE: **PX HEQ-87**

Luxury Toilet Roll Holder
• Dimensions: 180 x 110 x 65 mm



PRODUCT CODE: **PX HEQ-88**

Luxury Dual Robe Hook
• Dimensions: 130 x 90 x 90 mm



PRODUCT CODE: **PX HEQ-89**

Luxury Glass Shelf
• Dimensions: 500 x 155 x 50 mm



PRODUCT CODE: **PX HEQ-90**

Luxury Towel Bar
• Dimensions: 400 mm



PRODUCT CODE: **PX HEQ-91**

Housekeeping Cart with Two Bags

- High quality material
- MDF surface
- Scratch resistant powder coated
- Two dirty bag
- Convenient shelves
- Rubber wheel



PRODUCT CODE: **PX HEQ-92**

Housekeeping Cart Single Bag

- High quality material
- MDF surface
- Scratch resistant powder coated
- Single dirty bag
- Convenient shelves
- Rubber wheel



PRODUCT CODE: **PX HEQ-93**

Two Bag Laundry Cart

- Two rigid and two swivel wheels
- Full wrap-around bumper is designed for anti-collision



PRODUCT CODE: **PX HEQ-94**

Plastic Laundry Cart

- Metal body
- Capacity 240 l
- Plastic inside surface
- 4 heavy-duty rubber casters allow the laundry sorter move freely



PRODUCT CODE: **PX HEQ-95**

Metal Laundry Cart

- Electrostatic painted
- DKP material
- Two rigid and two swivel wheels



PRODUCT CODE: **PX HEQ-96**

Bushel Wire Laundry Cart

- Chromed Metal

HOTEL EQUIPMENTS



PRODUCT CODE: **PX HEQ-97**

Clean Laundry Cart

- Scratch resistant powder coated
- DKP material
- 4 Mdfiam shelves
- Zippered tarpaulin
- Two rigid and two swivel wheels



PRODUCT CODE: **PX HEQ-98**

Hotel Baggage Trolley (Brass)

- Brass plated
- Folding skeleton
- Carpeted surface
- Rubber wheel



PRODUCT CODE: **PX HEQ-99**

Hotel Baggage Trolley (Stainless Steel)

- AISI 304 stainless steel plated
- Folding skeleton
- Carpeted surface
- Rubber wheel



PRODUCT CODE: **PX HEQ-100**

Brass Barrier & Rope

- Brass plated
- Velvet rope



PRODUCT CODE: **PX HEQ-101**

Hotel Luggage Trolley (Stainless Steel)

- Chrome plated
- MDF carpeted surface
- Two rigid and two swivel wheels
- Full wrap-around bumper is designed for anti-collision



PRODUCT CODE: **PX HEQ-102**

Hotel Luggage Trolley (Brass)

- Brass plated
- MDF carpeted surface
- Two rigid and two swivel wheels
- Full wrap-around bumper is designed for anti-collision



PRODUCT CODE: **PX HEQ-103**

5-Hour World Clock

- Chrome metal frame
- Real glass
- Flowing seconds
- 60 cm



PRODUCT CODE: **PX HEQ-104**

Reception Bell (Brass)

- Brass body



PRODUCT CODE: **PX HEQ-105**

Reception Bell (Stainless Steel)

- Metal body



PRODUCT CODE: **PX HEQ-106**

- Wood Service Trolley**
- Chrome-plated steel, wood
 - 3 shelves
 - Two rigid and two swivel wheels



PRODUCT CODE: **PX HEQ-107**

- Minibar Trolley**
- MDF plated
 - Scratch resistant powder coated
 - Fully lockable unit
 - 4 shelves
 - Two rigid and two swivel wheels
 - Full wrap-around bumper is designed for anti-collision



PRODUCT CODE: **PX HEQ-108**

- Waiter Station**
- MDF plated
 - Two enclosed sections
 - Multi-compartment drawer
 - Two rigid and two swivel wheels



PRODUCT CODE: **PX HEQ-109**

- Room Service Table**
- Scratch resistant powder coated
 - DKP material
 - Folding top table
 - Mdflam Table
 - Two rigid and two swivel wheels



PRODUCT CODE: **PX HEQ-110**

- Wooden High Chair**
- It is made of the wood
 - Cushioned
 - Foldable
 - Wheeled



PRODUCT CODE: **PX HEQ-111**

- Plastic High Chair**
- Three-point seat belt
 - Specially designed support pipes between legs that are not damaged by corrosion and external factors
 - Foot that prevents slipping and breaking on slippery floors